

● 07CS-38

2006 Drill Hole → ●

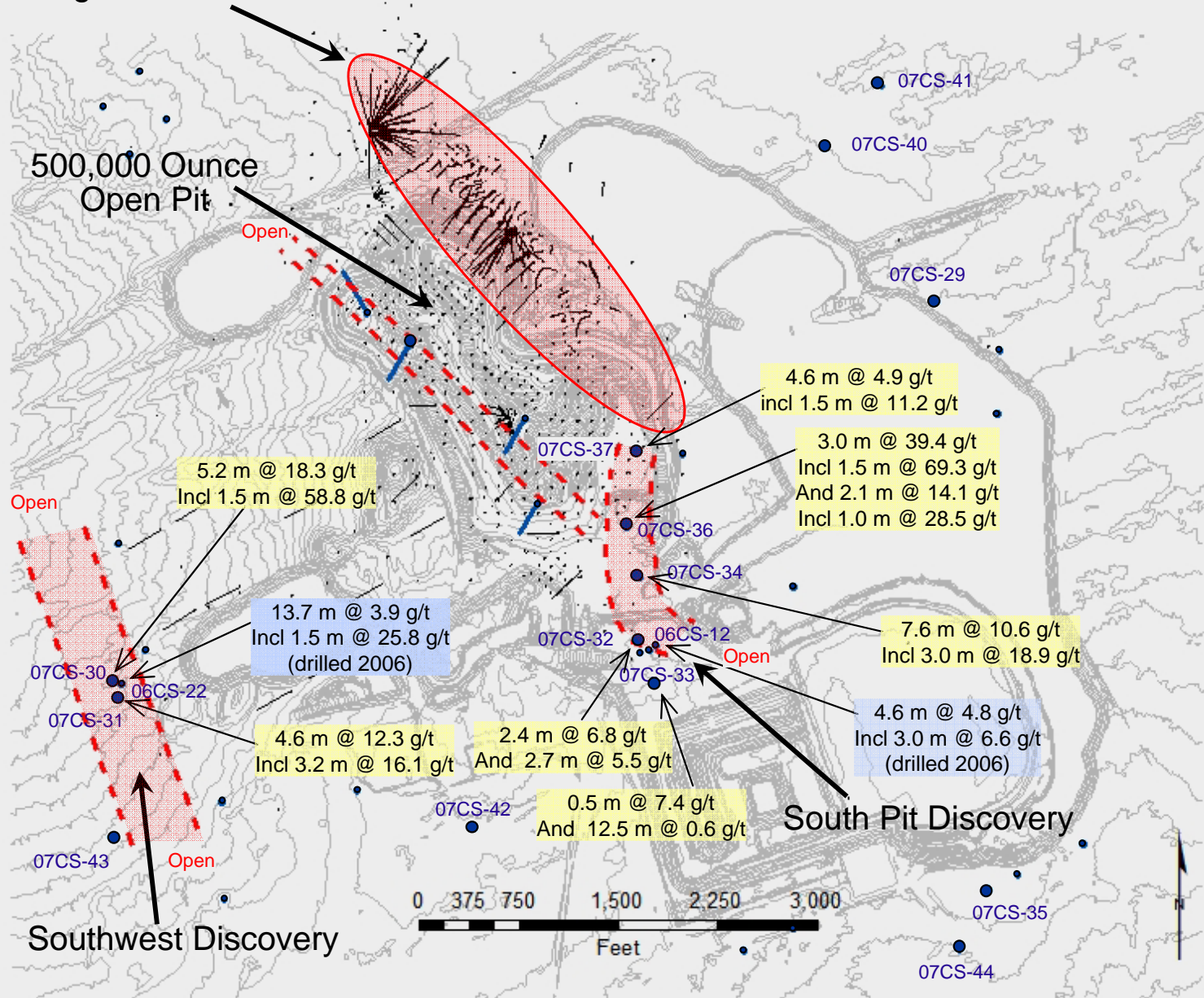
2007 Drill Hole → ● 07CS-28

● 07CS-39

# Copperstone Phase II Drilling

High Grade Resource

500,000 Ounce  
Open Pit



Open

Open

4.6 m @ 4.9 g/t  
incl 1.5 m @ 11.2 g/t

3.0 m @ 39.4 g/t  
Incl 1.5 m @ 69.3 g/t  
And 2.1 m @ 14.1 g/t  
Incl 1.0 m @ 28.5 g/t

5.2 m @ 18.3 g/t  
Incl 1.5 m @ 58.8 g/t

13.7 m @ 3.9 g/t  
Incl 1.5 m @ 25.8 g/t  
(drilled 2006)

7.6 m @ 10.6 g/t  
Incl 3.0 m @ 18.9 g/t

4.6 m @ 12.3 g/t  
Incl 3.2 m @ 16.1 g/t

2.4 m @ 6.8 g/t  
And 2.7 m @ 5.5 g/t

4.6 m @ 4.8 g/t  
Incl 3.0 m @ 6.6 g/t  
(drilled 2006)

0.5 m @ 7.4 g/t  
And 12.5 m @ 0.6 g/t

Southwest Discovery

South Pit Discovery

